

FN7325 Multiaxial Load Cell



- 6-Components Load Cell
- 5 to 0-250 kN (1 to 50 kLbf)
- Measures force in three directions X, Y, Z
- Measures torque in three directions Mx, My, Mz
- Minimal Cross Effects
- High Level Output Model with Integrated Amplifier

DESCRIPTION

The multi-axial FN7325 measures force from 0-5 kN to 0-250 kN along three axes as well as the corresponding torque from 0-200 N.m to 0-7000 N.m. The FN7325 is simple to use and install and in many diverse applications circumvents the necessity of employing multiple single-axes units. For high-level output a model with integrated amplifier is available.

With many years of experience as a designer and manufacturer of sensors, Measurement-Specialties often works with customers to design or customize sensors for specific uses and testing environments.

To meet your needs we also offer complete turnkey systems. The matched components (sensor, power, amplifier and digital display) are formatted, calibrated and ready for immediate use.

FEATURES

- Full Scale Range from 0-5 kN to 0-250 kN
- Measures force in three directions X, Y, Z
- Measures torque in three directions Mx, My, Mz
- High Level Output Model with Integrated Amplifier
- Minimal Cross Effects

APPLICATIONS

- Mechanical Linkage
- Structure Testing
- Crash Testing
- Automotive Testing
- Industrial Test Benches

STANDARD RANGES

Model	FN7325-M6		FN7325-M8		FN7325-M10		FN7325-M12		FN7325-M16	
Force X/Y in N [Lbf]	5 000	[1 000]	15 000	[3 000]	30 000	[6 000]	60 000	[12 000]	100 000	[20 000]
Force Z in N [Lbf]	15 000	[3 000]	30 000	[6 000]	50 000	[10 000]	100 000	[20 000]	250 000	[50 000]
Torque X/Y/Z in N.m [Lbf.ft]	200	[145]	600	[440]	1 200	[885]	2 800	[2 065]	7 000	[5 160]

FN7325 Multiaxial Load Cell

PERFORMANCE SPECIFICATIONS

Ambient Temperature: 20±1°C (unless otherwise specified)

PARAMETERS

Operating Temperature Range (OTR)	-20 to 80 °C [-4 to 176 °F]
Compensated Temperature Range (CTR)	0 to 60 °C [32 to 140 °F]
Zero Shift in CTR	<1% F.S./50°C [100°F]
Sensitivity Shift in CTR	<5.10 ⁻⁴ / °C of reading <2.5.10 ⁻⁴ / °F of reading]
Range (F.S.)	0-5 kN to 0-250 kN (see dimensions)

Over-Range

Without Damage	1.2 x F.S.
----------------	------------

Accuracy

Combined Non-Linearity & Hysteresis	From 1-5% F.S.
Cross Effects	3% Typical – max. 5%

Electrical Characteristics

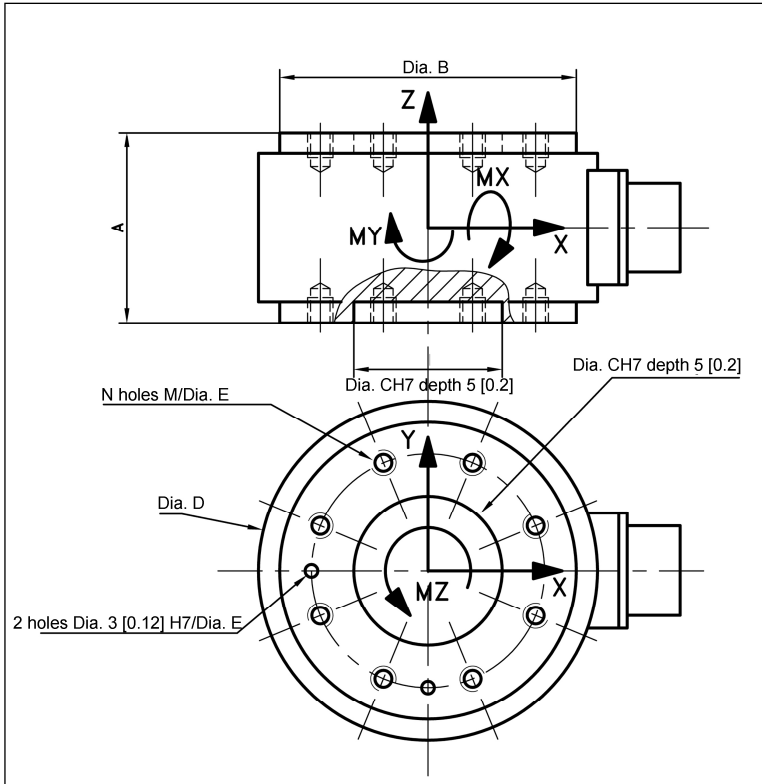
Model	FN7325	FN7325-A1	FN7325-A2
Supply Outage	10 Vdc	10 to 30 Vdc	±15 Vdc (±12 to ± 18 Vdc)
F.S. Output	10 - 15mV/V	0.5 to 4.5 V	±5 V
Zero Offset	±5% F.S.	2.5 V ±5% F.S.	0 V ±5% F.S.
Insulation under 50Vdc	≥100 MΩ	≥100 MΩ	≥100 MΩ

Notes

1. Electrical Termination: Connector output including mate
2. Materials: Body in stainless steel cover in aluminium alloy
3. Protection index: IP50

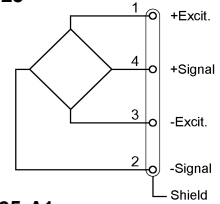
FN7325 Multiaxial Load Cell

DIMENSIONS & WIRING SCHEMATIC (IN METRIC AND IMPERIAL)

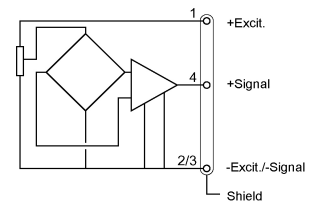


Wiring Schematic

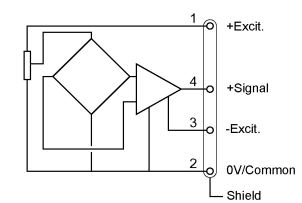
FN7325



FN7325-A1



FN7325-A2



Dimensions in mm [inch]

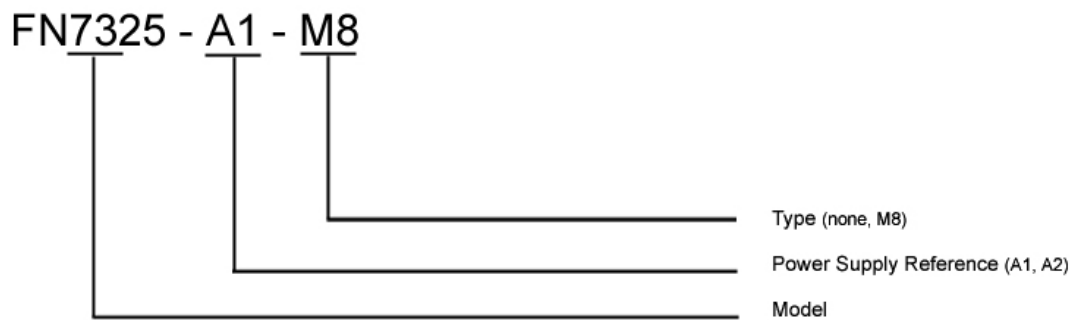
Model	FN7325-M6	FN7325-M8	FN7325-M10	FN7325-M12	FN7325-M16
Force X/Y in N [Lbf]	5000 [1000]	15000 [3000]	30000 [6000]	60000 [12000]	100000 [20000]
Force Z in N [Lbf]	15000 [3000]	30000 [6000]	50000 [10000]	100000 [20000]	250000 [50000]
Torque X/Y/Z in N.m [Lbf.ft]	200 [145]	600 [440]	1200 [885]	2800 [2065]	7000 [5160]
A	50 [1.97]	55 [2.17]	65 [2.56]	75 [2.95]	90 [3.54]
B	70 [2.76]	88 [3.46]	114 [4.49]	148 [5.83]	190 [7.48]
C	35 [1.38]	40 [1.57]	50 [1.97]	65 [2.56]	90 [3.54]
D	80 [3.15]	98 [3.86]	124 [4.88]	158 [6.22]	200 [7.87]
N	8 x M6/Ø55 [2.17]	8 x M8/ Ø70 [2.76]	8 x M10/Ø95 [3.74]	12 x M12/Ø125 [4.92]	12 x M16/Ø150 [5.91]

FN7325 Multiaxial Load Cell

OPTIONS

A1 : Unipolar tension
A2 : Bipolar tension

ORDERING INFO



NORTH AMERICA

Measurement Specialties
45738 Northport Loop West
Fremont, CA 94538
USA
Tel: 1-800-767-1888
Fax: 1-510-498-1578
Sales: pfg.cs.amer@meas-spec.com

EUROPE

Measurement Specialties
(Europe), Ltd.
26 Rue des Dames
78340 Les Clayes-sous-Bois,
France
Tel: +33 (0) 130 79 33 00
Fax: +33 (0) 134 81 03 59
Sales: pfg.cs.emea@meas-spec.com

ASIA

北京赛斯维测控技术有限公司
北京市朝阳区望京西路48号
金隅国际C座1002
电话 : + 86 010 8477 5646
传真 : + 86 010 5894 9029
邮箱 : sales@sensorway.cn
<http://www.sensorway.cn>

The information in this sheet has been carefully reviewed and is believed to be accurate; however, no responsibility is assumed for inaccuracies. Furthermore, this information does not convey to the purchaser of such devices any license under the patent rights to the manufacturer. Measurement Specialties, Inc. reserves the right to make changes without further notice to any product herein. Measurement Specialties, Inc. makes no warranty, representation or guarantee regarding the suitability of its product for any particular purpose, nor does Measurement Specialties, Inc. assume any liability arising out of the application or use of any product or circuit and specifically disclaims any and all liability, including without limitation consequential or incidental damages. Typical parameters can and do vary in different applications. All operating parameters must be validated for each customer application by customer's technical experts. Measurement Specialties, Inc. does not convey any license under its patent rights nor the rights of others.